

# 2325 Parklawn Dr · Waukesha, WI

## For Sub-Lease

High Image Flex Building—Westbrook Business Center



### Building Features

Building Size:	66,668 SF
Available:	3,944 SF, Suite M
Occupancy:	Immediate
Lease Term:	Expires 8/31/10
Zoning:	M-1, light manufacturing & warehouse district

### Pricing

Lease Rate:	\$5.08/RSF, NNN plus operating expenses
Est. Operating Expenses:	\$1.85/RSF

### Office Features

Available:	1,364 SF
------------	----------

### Warehouse/Manufacturing Features

Available:	2,580 SF
Ceiling Height:	17'
Heat:	Gas fired modines
Drive-Ins:	One (1)

## For Information:

**Karen J. Johnson, CCIM**

**(262) 938-4432**

[kjohnson@mlgcommercial.com](mailto:kjohnson@mlgcommercial.com)

- Convenient Goerkes Corners location
- Minutes to I-94

**NAI MLG Commercial**

Commercial Real Estate Services Worldwide.

13400 Bishop's Lane • Suite 100  
Brookfield, WI 53005

**(262) 797-9400** | (262) 797-8940 fax

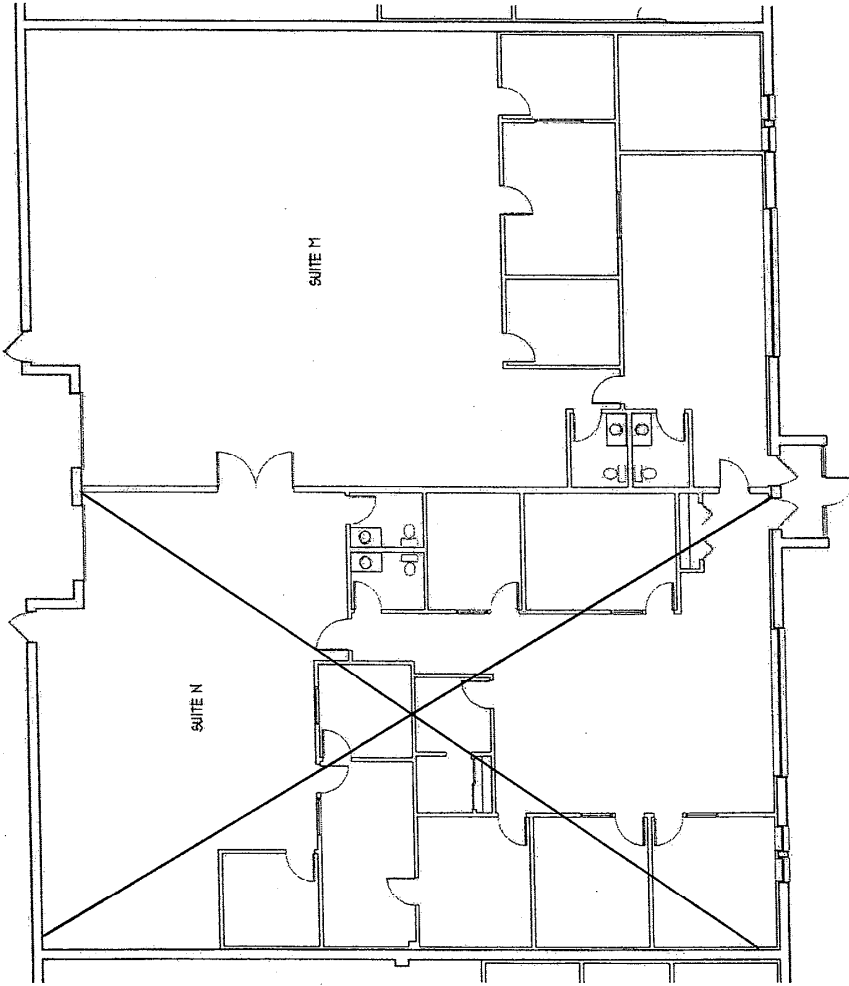
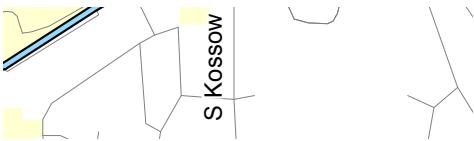
Offices also in Milwaukee, Appleton and Madison, WI

[www.mlgcommercial.com](http://www.mlgcommercial.com)

22003

**The Leader In Commercial Real Estate.**

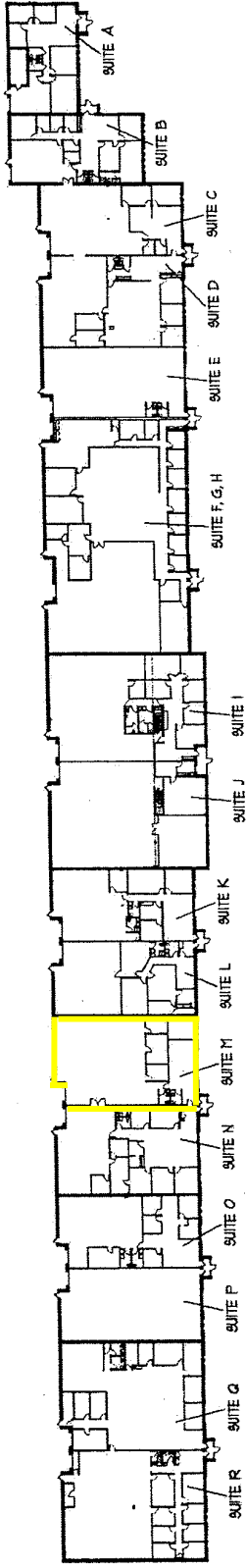
Information shown herein was provided by the Seller/Lessor and/or other third parties and has not been verified by the broker unless otherwise indicated.



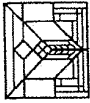
AREA CALCULATIONS, USF.	
SUITE M:	1364
OFFICE:	2580
WAREHOUSE:	3944
TOTAL:	

① PARTIAL FLOOR PLAN  
SCALE: 3/8" = 1'-0"

<p>AS-BUILT DRAWINGS FOR: <b>2325 PARKLAWN DRIVE</b> WAUKESHA, WISCONSIN <b>SUITE M &amp; N</b></p>	<p>INFORMATION</p>	<p>SHEET NO.</p>
	<p>PROJECT ARCHITECT: SFS DRAWN BY: TDS PROJECT NO.: MLG-02-217 DATE: MAY 9, 2002</p>	<p><b>A1.6</b></p>
<p>ADDRESS</p> <p>14135 N. CEDARBURG ROAD. MILWAUKEE, WISCONSIN 53097 TELEPHONE: 262-376-1579 FACSIMILE: 262-376-1584</p>	<p>STEPHEN PERRY SMITH ARCHITECTS</p>	



① KEYPLAN  
SCALE 1/8" = 1'-0"

 <b>STEPHEN PERRY SMITH ARCHITECTS</b>	<b>ADDRESS</b> 14135 N. CEDARBURG ROAD MEQUON, WISCONSIN 53097 TELEPHONE: 262-376-1579 FACSIMILE: 262-376-1584	<b>AS-BUILT DRAWINGS FOR:</b> <b>2325 PARKLAWN DRIVE</b> WAUKESHA, WISCONSIN <b>KEYPLAN</b>	<b>INFORMATION</b> PROJECT ARCHITECT: SPS DRAWN BY: JDS PROJECT NO.: MLG-02-217 DATE: MAY 9, 2002	<b>SHEET NO.</b> <b>A1.9</b>
---	--	--	---	---------------------------------

**NAI MLG Commercial**  
 Commercial Real Estate Services Worldwide.

22003

(262) 797-9400 | (262) 797-8940 fax

Information shown herein was provided by the Seller/Lessor and/or other third parties and has not been verified by the broker unless otherwise indicated.

**The Leader In Commercial Real Estate.**

**WISCONSIN REALTORS® ASSOCIATION**

4801 Forest Run Road  
Madison, Wisconsin 53704

**BROKER DISCLOSURE TO CUSTOMERS**

1 Prior to negotiating on your behalf the Broker must provide you the following disclosure statement:

2 **BROKER DISCLOSURE TO CUSTOMERS**

3 You are a customer of the broker. The broker is either an agent of another party in the transaction or a subagent of another broker  
4 who is the agent of another party in the transaction. The broker, or a salesperson acting on behalf of the broker, may provide  
5 brokerage services to you. Whenever the broker is providing brokerage services to you, the broker owes you, the customer, the  
6 following duties:

- 7  The duty to provide brokerage services to you fairly and honestly.
- 8  The duty to exercise reasonable skill and care in providing brokerage services to you.
- 9  The duty to provide you with accurate information about market conditions within a reasonable time if you request it, unless  
10 disclosure of the information is prohibited by law.
- 11  The duty to disclose to you in writing certain material adverse facts about a property, unless disclosure of the information is  
12 prohibited by law (**See Lines 55-63**).
- 13  The duty to protect your confidentiality. Unless the law requires it, the broker will not disclose your confidential information or the  
14 confidential information of other parties (**See Lines 22-39**).
- 15  The duty to safeguard trust funds and other property the broker holds.
- 16  The duty, when negotiating, to present contract proposals in an objective and unbiased manner and disclose the advantages and  
17 disadvantages of the proposals.

18 Please review this information carefully. A broker or salesperson can answer your questions about brokerage services, but if you  
19 need legal advice, tax advice, or a professional home inspection, contact an attorney, tax advisor, or home inspector.  
20 This disclosure is required by section 452.135 of the Wisconsin statutes and is for information only. It is a plain-language summary of  
21 a broker's duties to a customer under section 452.133 (1) of the Wisconsin statutes.

22 **CONFIDENTIALITY NOTICE TO CUSTOMERS**

23 BROKER WILL KEEP CONFIDENTIAL ANY INFORMATION GIVEN TO BROKER IN CONFIDENCE, OR ANY INFORMATION  
24 OBTAINED BY BROKER THAT HE OR SHE KNOWS A REASONABLE PERSON WOULD WANT TO BE KEPT CONFIDENTIAL,  
25 UNLESS THE INFORMATION MUST BE DISCLOSED BY LAW OR YOU AUTHORIZE THE BROKER TO DISCLOSE PARTICULAR  
26 INFORMATION. A BROKER SHALL CONTINUE TO KEEP THE INFORMATION CONFIDENTIAL AFTER BROKER IS NO LONGER  
27 PROVIDING BROKERAGE SERVICES TO YOU.

28 THE FOLLOWING INFORMATION IS REQUIRED TO BE DISCLOSED BY LAW:

- 29 1. MATERIAL ADVERSE FACTS, AS DEFINED IN SECTION 452.01 (5g) OF THE WISCONSIN STATUTES (**SEE LINES 55-63**).
- 30 2. ANY FACTS KNOWN BY THE BROKER THAT CONTRADICT ANY INFORMATION INCLUDED IN A WRITTEN INSPECTION  
31 REPORT ON THE PROPERTY OR REAL ESTATE THAT IS THE SUBJECT OF THE TRANSACTION.
- 32 TO ENSURE THAT THE BROKER IS AWARE OF WHAT SPECIFIC INFORMATION YOU CONSIDER CONFIDENTIAL, YOU MAY LIST  
33 THAT INFORMATION BELOW (**SEE LINES 35-36**). AT A LATER TIME, YOU MAY ALSO PROVIDE THE BROKER WITH OTHER  
34 INFORMATION YOU CONSIDER TO BE CONFIDENTIAL.

35 **CONFIDENTIAL INFORMATION:**

36 \_\_\_\_\_

37 **NON-CONFIDENTIAL INFORMATION** (The following information may be disclosed by Broker): \_\_\_\_\_

38 \_\_\_\_\_

39 (INSERT INFORMATION YOU AUTHORIZE THE BROKER TO DISCLOSE SUCH AS FINANCIAL QUALIFICATION INFORMATION.)

40 **CONSENT TO TELEPHONE SOLICITATION**

41 I/We agree that the Broker and any affiliated settlement service providers (for example, a mortgage company or title company) may  
42 call our/my home or cell phone numbers regarding issues, goods and services related to the real estate transaction until I/we  
43 withdraw this consent in writing.

44 **List Home/Cell Numbers:**

45 **SEX OFFENDER REGISTRY**

46 Notice: You may obtain information about the sex offender registry and persons registered with the registry by contacting the  
47 Wisconsin Department of Corrections on the Internet at: <http://offender.doc.state.wi.us/public/> or by phone at 877-234-0085.

48 BY INITIALING AND DATING BELOW I/WE ACKNOWLEDGE RECEIPT OF A COPY OF THIS DISCLOSURE AND  
49 THAT \_\_\_\_\_ and \_\_\_\_\_ are working

50 Sales Associate ▲ Firm Name ▲

51 as: (Owner's Listing Broker's Agent) (Buyer's/Tenant's Agent or Buyer's Broker's Agent) **STRIKE ONE**.

52 **INITIALING THIS FORM TO ACKNOWLEDGE RECEIPT DOES NOT CREATE ANY LEGAL OBLIGATIONS TO BROKER.**

53 \_\_\_\_\_

54 Initials ▲ Date ▲ Print Name (optional) ▲ Initials ▲ Date ▲ Print Name (optional) ▲

No representation is made as to the legal validity of any provision or the adequacy of any provision in any specific transaction.  
Copyright 2006 by Wisconsin REALTORS® Association  
NAI MLG Commercial 13400 Bishop's Ln Ste 100, Brookfield WI 53005-6237 Phone (262) 797-9400 Drafted by Attorney Richard J. Staff Fax (262) 797-8940

55 **DEFINITION OF MATERIAL ADVERSE FACTS**

56 A "material adverse fact" is defined in Wis. Stat. § 452.01(5g) as an adverse fact that a party indicates is of such significance, or that  
57 is generally recognized by a competent licensee as being of such significance to a reasonable party, that it affects or would affect  
58 the party's decision to enter into a contract or agreement concerning a transaction or affects or would affect the party's decision  
59 about the terms of such a contract or agreement. An "adverse fact" is defined in Wis. Stat. § 452.01(1e) as a condition or occurrence  
60 that a competent licensee generally recognizes will significantly and adversely affect the value of the property, significantly reduce  
61 the structural integrity of improvements to real estate, or present a significant health risk to occupants of the property; or information  
62 that indicates that a party to a transaction is not able to or does not intend to meet his or her obligations under a contract or  
63 agreement made concerning the transaction.