

12000 W Park Place · Milwaukee, WI

For Lease - Office Space

Visibility From Highway 45



Building Features

| | |
|--------------|--|
| Size: | +/- 37,182 SF |
| Lot Size: | +/- 3.67 Acres |
| Description: | Class "A", one-story multi-tenant building |
| Built: | 1985; renovated 1995 |
| Sprinkler: | Yes |
| Parking: | Up to 138 cars |
| Signage: | Building monument |

Available Space

Up to 22,000 SF (Divisible from 2,000 SF and larger. See attached floor plan.)

Pricing

| | |
|--------------------|--|
| Lease Rate: | \$11.50/SF, NNN |
| Est. NNN Expenses: | \$5.83 Estimated CAM & Taxes (Tenant responsible for suite utilities and janitorial) |

Comments

Located in the Park Place Business Park, this building offers great glass lines for year-round views of ponds and beautifully landscaped grounds, patio, sunny atrium at building's front entrance, and an array of area amenities which include: banking, restaurants and easy access to Hwy 45.

For Information:

Rachel Schmidt, CCIM

(262) 938-4414

rschmidt@mlgcommercial.com

Steve Anderson

(262) 938-4459

sanderson@mlgcommercial.com

- **Building may be available for sale**
- **Easy North and South bound freeway access from Good Hope Rd and Hwy 145**
- **Great glass lines offering year round views**
- **Overhead door in tenant's space (see floor plan)**

NAI MLG Commercial

Commercial Real Estate Services Worldwide.

13400 Bishop's Lane • Suite 100
Brookfield, WI 53005

(262) 797-9400 | (262) 797-8940 fax

Offices also in Milwaukee, Appleton and Madison, WI

www.mlgcommercial.com

30838

The Leader In Commercial Real Estate.

Prospective Buyer/Tenant is hereby advised that: (1) a salesperson with, Principal in, or entity affiliated with NAI MLG Commercial ("NAI MLG") may be a member of Owner; (2) NAI MLG is acting solely as an agent of Owner and may receive a commission in connection with the sale or lease of the Properties; and (3) NAI MLG is not related to or affiliated with Owner other than acting as its agent in this transaction and will receive no economic benefit or compensation from Owner other than a commission.

Information shown herein was provided by the Seller/Lessor and/or other third parties and has not been verified by the broker unless otherwise indicated.



3350 S. BAYVIEW ROAD
WESTBROOK, WI 53085-7884
TEL: (262) 344-4911 FAX: (262) 344-4998

2,028 RSF

2,895 RSF

2,867 RSF

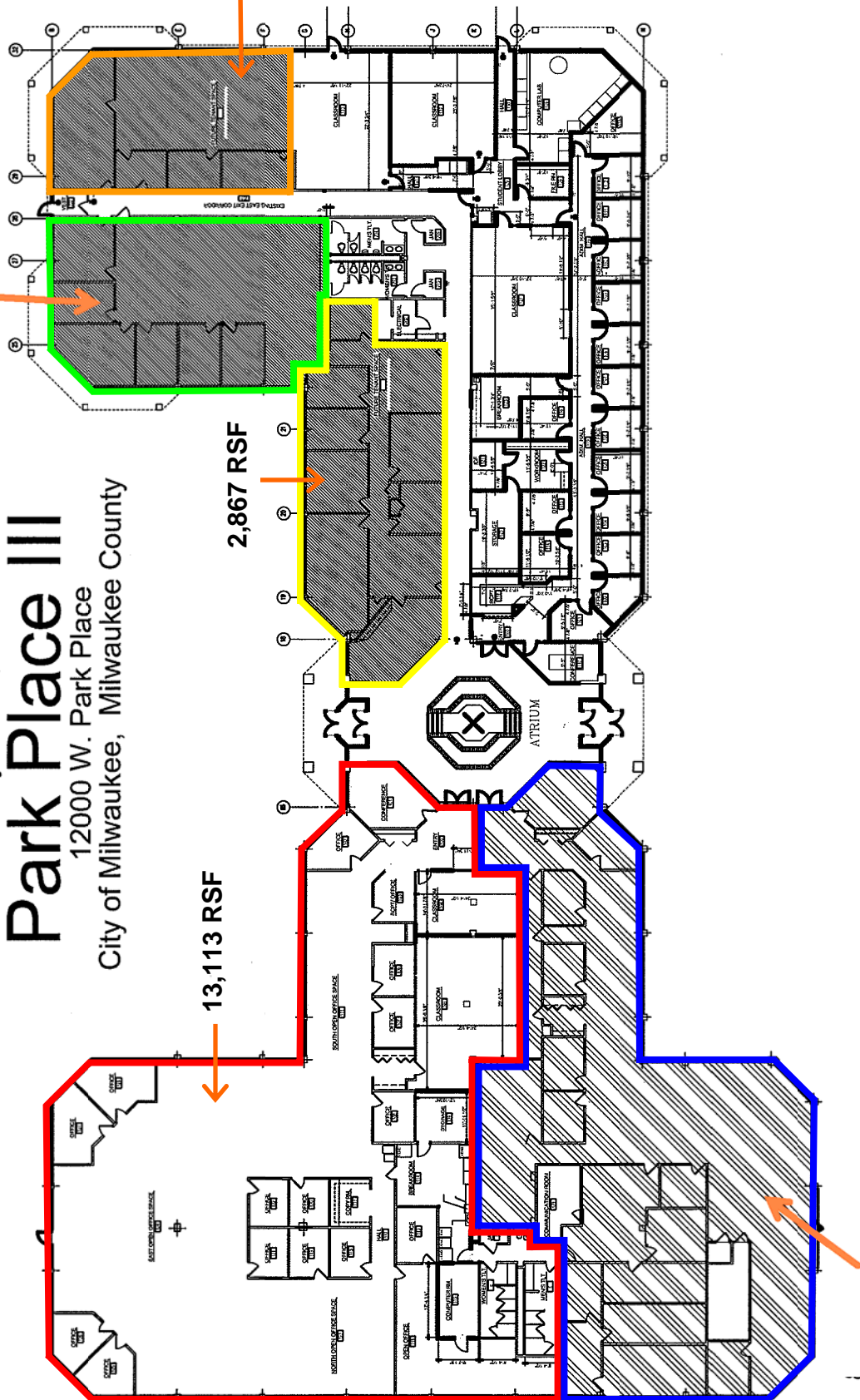
13,113 RSF

8,701 RSF
(overhead door to suite)

Multi-Business Tenant Building
Parkway Plaza, L.L.C.

Park Place III

12000 W. Park Place
City of Milwaukee, Milwaukee County



PROPOSED MASTER PLAN
PARK PLACE III
12000 WEST PARK PLACE
CITY OF MILWAUKEE, WI 53224

Sheet Contents
Master Floor Plan

Document Date
June 7, 2006
Plotted Date
August 16, 2006
Project Number
05665
Sheet Number

A1

Floor Plan

NAI MLG Commercial

Commercial Real Estate Services Worldwide.

30838

(414) 347-9400 | (414) 347-9401 fax

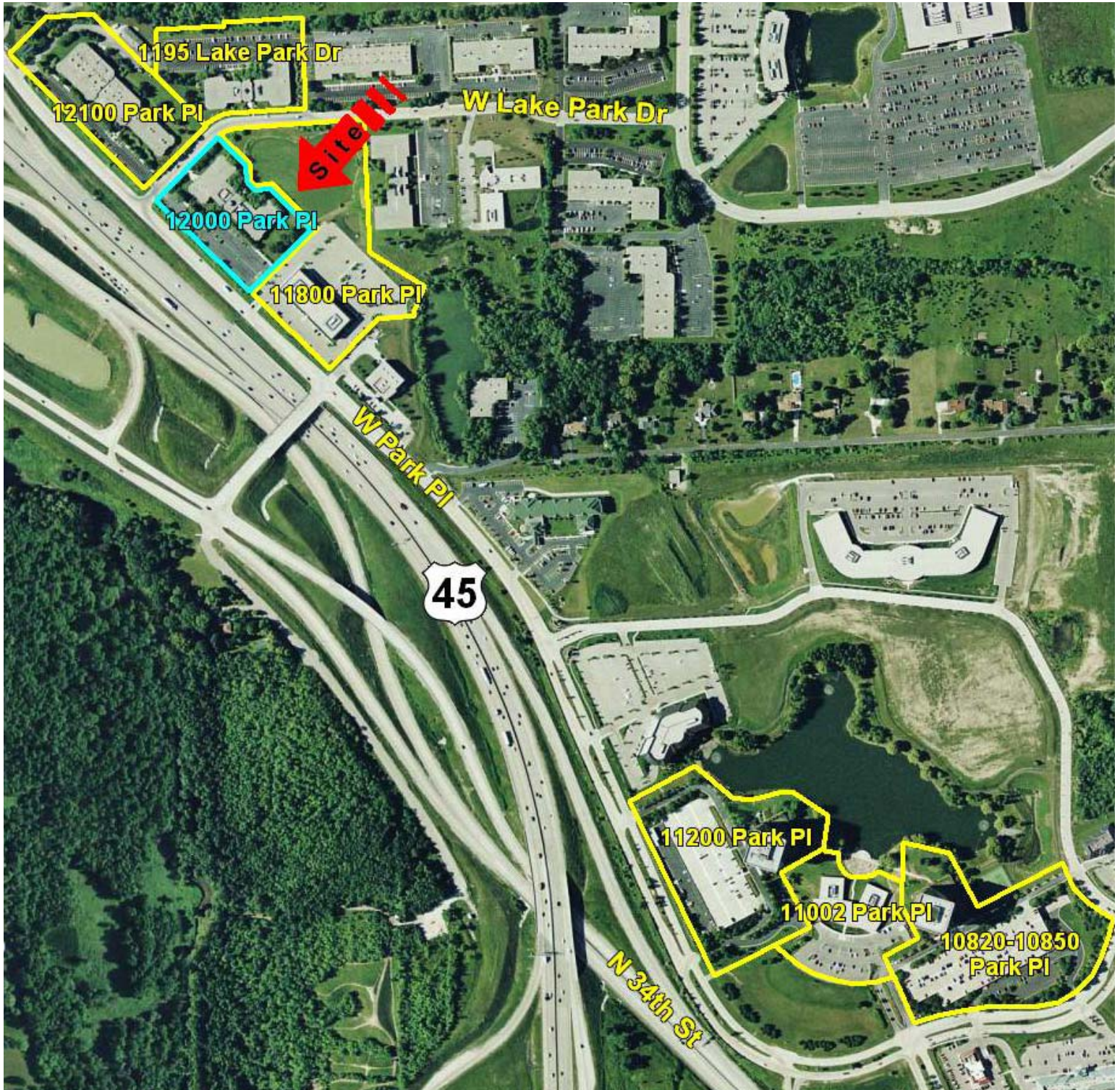
Information shown herein was provided by the Seller/Lessor and/or other third parties and has not been verified by the broker unless otherwise indicated.

The Leader In Commercial Real Estate.

12000 W Park Place · Milwaukee, WI

Aerial

Comparison of visibility from Highway 45



NAI MLG Commercial

Commercial Real Estate Services Worldwide.

30838

(262) 797-9400 | (262) 797-8940 fax

Information shown herein was provided by the Seller/Lessor and/or other third parties and has not been verified by the broker unless otherwise indicated.

The Leader In Commercial Real Estate.

WISCONSIN REALTORS® ASSOCIATION

4801 Forest Run Road
Madison, Wisconsin 53704

BROKER DISCLOSURE TO CUSTOMERS

1 Prior to negotiating on your behalf the Broker must provide you the following disclosure statement:

2 **BROKER DISCLOSURE TO CUSTOMERS**

3 You are a customer of the broker. The broker is either an agent of another party in the transaction or a subagent of another broker
4 who is the agent of another party in the transaction. The broker, or a salesperson acting on behalf of the broker, may provide
5 brokerage services to you. Whenever the broker is providing brokerage services to you, the broker owes you, the customer, the
6 following duties:

- 7 The duty to provide brokerage services to you fairly and honestly.
- 8 The duty to exercise reasonable skill and care in providing brokerage services to you.
- 9 The duty to provide you with accurate information about market conditions within a reasonable time if you request it, unless
10 disclosure of the information is prohibited by law.
- 11 The duty to disclose to you in writing certain material adverse facts about a property, unless disclosure of the information is
12 prohibited by law (**See Lines 55-63**).
- 13 The duty to protect your confidentiality. Unless the law requires it, the broker will not disclose your confidential information or the
14 confidential information of other parties (**See Lines 22-39**).
- 15 The duty to safeguard trust funds and other property the broker holds.
- 16 The duty, when negotiating, to present contract proposals in an objective and unbiased manner and disclose the advantages and
17 disadvantages of the proposals.

18 Please review this information carefully. A broker or salesperson can answer your questions about brokerage services, but if you
19 need legal advice, tax advice, or a professional home inspection, contact an attorney, tax advisor, or home inspector.
20 This disclosure is required by section 452.135 of the Wisconsin statutes and is for information only. It is a plain-language summary of
21 a broker's duties to a customer under section 452.133 (1) of the Wisconsin statutes.

22 **CONFIDENTIALITY NOTICE TO CUSTOMERS**

23 BROKER WILL KEEP CONFIDENTIAL ANY INFORMATION GIVEN TO BROKER IN CONFIDENCE, OR ANY INFORMATION
24 OBTAINED BY BROKER THAT HE OR SHE KNOWS A REASONABLE PERSON WOULD WANT TO BE KEPT CONFIDENTIAL,
25 UNLESS THE INFORMATION MUST BE DISCLOSED BY LAW OR YOU AUTHORIZE THE BROKER TO DISCLOSE PARTICULAR
26 INFORMATION. A BROKER SHALL CONTINUE TO KEEP THE INFORMATION CONFIDENTIAL AFTER BROKER IS NO LONGER
27 PROVIDING BROKERAGE SERVICES TO YOU.

28 THE FOLLOWING INFORMATION IS REQUIRED TO BE DISCLOSED BY LAW:

- 29 1. MATERIAL ADVERSE FACTS, AS DEFINED IN SECTION 452.01 (5g) OF THE WISCONSIN STATUTES (**SEE LINES 55-63**).
- 30 2. ANY FACTS KNOWN BY THE BROKER THAT CONTRADICT ANY INFORMATION INCLUDED IN A WRITTEN INSPECTION
31 REPORT ON THE PROPERTY OR REAL ESTATE THAT IS THE SUBJECT OF THE TRANSACTION.
- 32 TO ENSURE THAT THE BROKER IS AWARE OF WHAT SPECIFIC INFORMATION YOU CONSIDER CONFIDENTIAL, YOU MAY LIST
33 THAT INFORMATION BELOW (**SEE LINES 35-36**). AT A LATER TIME, YOU MAY ALSO PROVIDE THE BROKER WITH OTHER
34 INFORMATION YOU CONSIDER TO BE CONFIDENTIAL.

35 **CONFIDENTIAL INFORMATION:**

36 _____

37 **NON-CONFIDENTIAL INFORMATION** (The following information may be disclosed by Broker): _____

38 _____

39 (INSERT INFORMATION YOU AUTHORIZE THE BROKER TO DISCLOSE SUCH AS FINANCIAL QUALIFICATION INFORMATION.)

40 **CONSENT TO TELEPHONE SOLICITATION**

41 I/We agree that the Broker and any affiliated settlement service providers (for example, a mortgage company or title company) may
42 call our/my home or cell phone numbers regarding issues, goods and services related to the real estate transaction until I/we
43 withdraw this consent in writing.

44 **List Home/Cell Numbers:**

45 **SEX OFFENDER REGISTRY**

46 Notice: You may obtain information about the sex offender registry and persons registered with the registry by contacting the
47 Wisconsin Department of Corrections on the Internet at: <http://offender.doc.state.wi.us/public/> or by phone at 877-234-0085.

48 BY INITIALING AND DATING BELOW I/WE ACKNOWLEDGE RECEIPT OF A COPY OF THIS DISCLOSURE AND
49 THAT _____ and _____ are working

50 Sales Associate ▲ Firm Name ▲

51 as: (Owner's Listing Broker's Agent) (Buyer's/Tenant's Agent or Buyer's Broker's Agent) **STRIKE ONE**.

52 **INITIALING THIS FORM TO ACKNOWLEDGE RECEIPT DOES NOT CREATE ANY LEGAL OBLIGATIONS TO BROKER.**

53 _____

54 Initials ▲ Date ▲ Print Name (optional) ▲ Initials ▲ Date ▲ Print Name (optional) ▲

No representation is made as to the legal validity of any provision or the adequacy of any provision in any specific transaction.
Copyright 2006 by Wisconsin REALTORS® Association
NAI MLG Commercial 13400 Bishop's Ln Ste 100, Brookfield WI 53005-6237 Phone (262) 797-9400 Drafted by Attorney Richard J. Staff Fax (262) 797-8940

55 **DEFINITION OF MATERIAL ADVERSE FACTS**

56 A "material adverse fact" is defined in Wis. Stat. § 452.01(5g) as an adverse fact that a party indicates is of such significance, or that
57 is generally recognized by a competent licensee as being of such significance to a reasonable party, that it affects or would affect
58 the party's decision to enter into a contract or agreement concerning a transaction or affects or would affect the party's decision
59 about the terms of such a contract or agreement. An "adverse fact" is defined in Wis. Stat. § 452.01(1e) as a condition or occurrence
60 that a competent licensee generally recognizes will significantly and adversely affect the value of the property, significantly reduce
61 the structural integrity of improvements to real estate, or present a significant health risk to occupants of the property; or information
62 that indicates that a party to a transaction is not able to or does not intend to meet his or her obligations under a contract or
63 agreement made concerning the transaction.