

# 21075 Swenson Dr · Waukesha, WI

## For Lease/Ownership Opportunity

### Crossroads V



#### Description

Single-story, 20,000 SF office and medical building

#### Space Available and Rates

Suite 100:	6,300 RSF
Suite 400:	1,157 RSF
Suite 500:	2,759 RSF

**Lease Rate**                      \$12.00/RSF, NNN

#### Operating Expenses

Tenant to pay its proportionate share of operating expenses, which include: real estate taxes, CAM and insurance, estimated at \$6.50/RSF. Tenant responsible for its suite utilities and janitorial.

#### Ownership Opportunity

Equity investment opportunities available to tenants, if desired.

## For Information:

**Tim Brunow**

**(414) 908-9154**

[tbrunow@mlgcommercial.com](mailto:tbrunow@mlgcommercial.com)

**Steffi Krolikowski**

**(414) 908-9153**

[skrolikowski@mlgcommercial.com](mailto:skrolikowski@mlgcommercial.com)

- Large exterior signage
- Excellent freeway accessibility
- Abundant area amenities

**NAI MLG Commercial**

Commercial Real Estate Services Worldwide.

1110 North Old World Third Street • Suite 400  
Milwaukee, WI 53203

**(414) 347-9400** | (414) 347-9401 fax

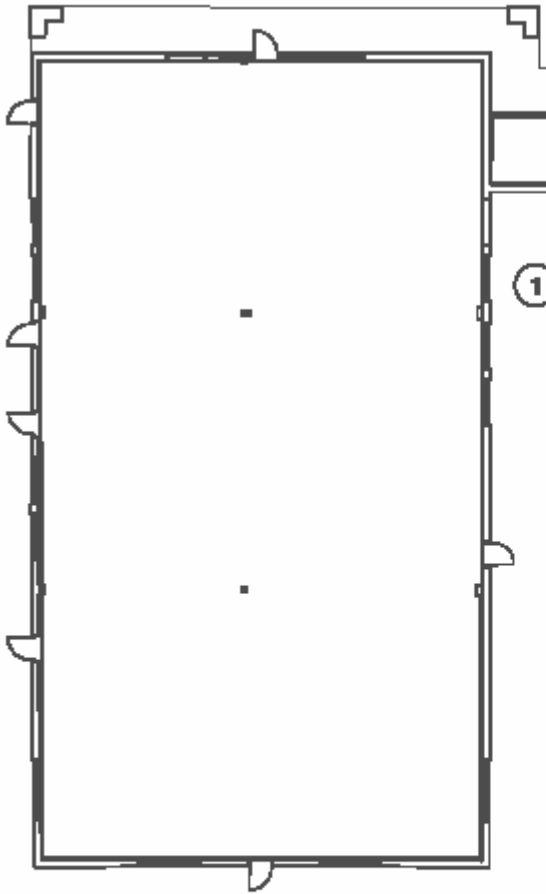
Offices also in Brookfield, Appleton and Madison, WI

[www.mlgcommercial.com](http://www.mlgcommercial.com)

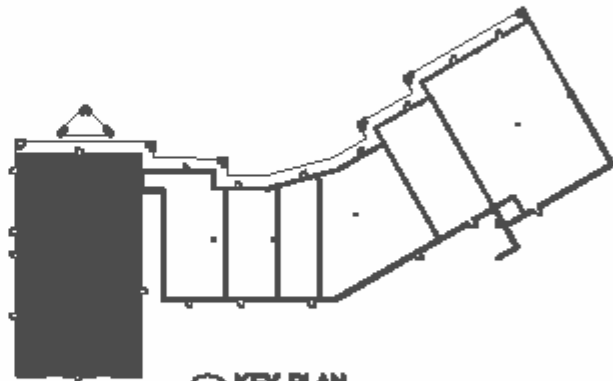
20448

**The Leader In Commercial Real Estate.**

Information shown herein was provided by the Seller/Lessor and/or other third parties and has not been verified by the broker unless otherwise indicated.



1 FLOOR PLAN  
NOT TO SCALE



2 KEY PLAN  
NOT TO SCALE



CROSSROADS CORPORATE CENTER V  
6,305 RSF  
SUITE 100  
21075 SWENSON DR  
not to scale



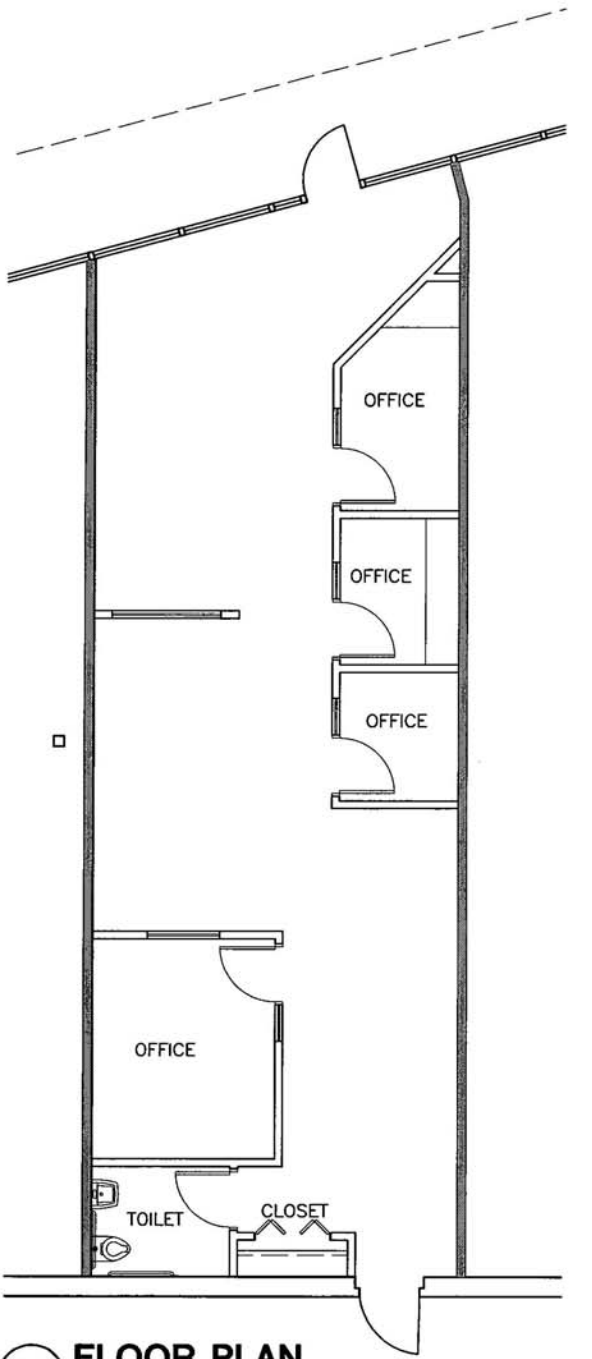
Commercial Real Estate Services Worldwide.

20448

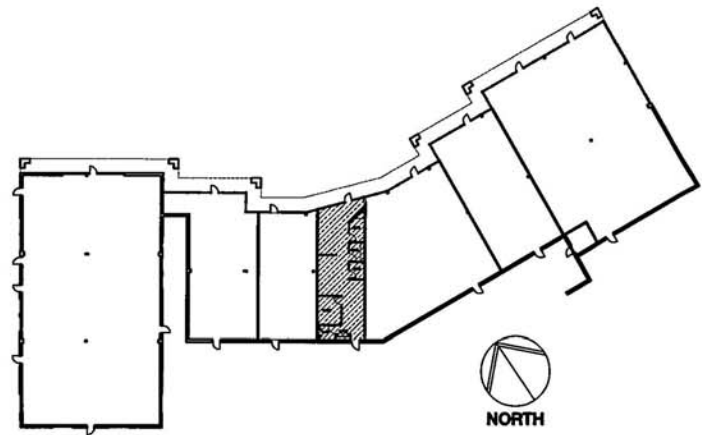
(414) 347-9400 | (414) 347-9401 fax

Information shown herein was provided by the Seller/Lessor and/or other third parties and has not been verified by the broker unless otherwise indicated.

The Leader In Commercial Real Estate.



**1 FLOOR PLAN**  
Not to Scale



**2 KEY PLAN**  
Not to Scale



**CROSSROADS CORPORATE CENTER V**  
**SUITE 400/ 1,157 RENTABLE SQ. FT.**  
**21075 SWENSON DR.**  
**WAUKESHA, WISCONSIN 53186**



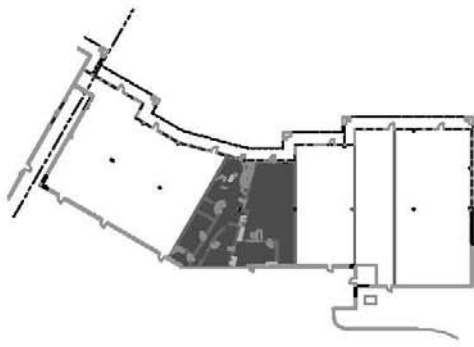
Commercial Real Estate Services Worldwide.

20448

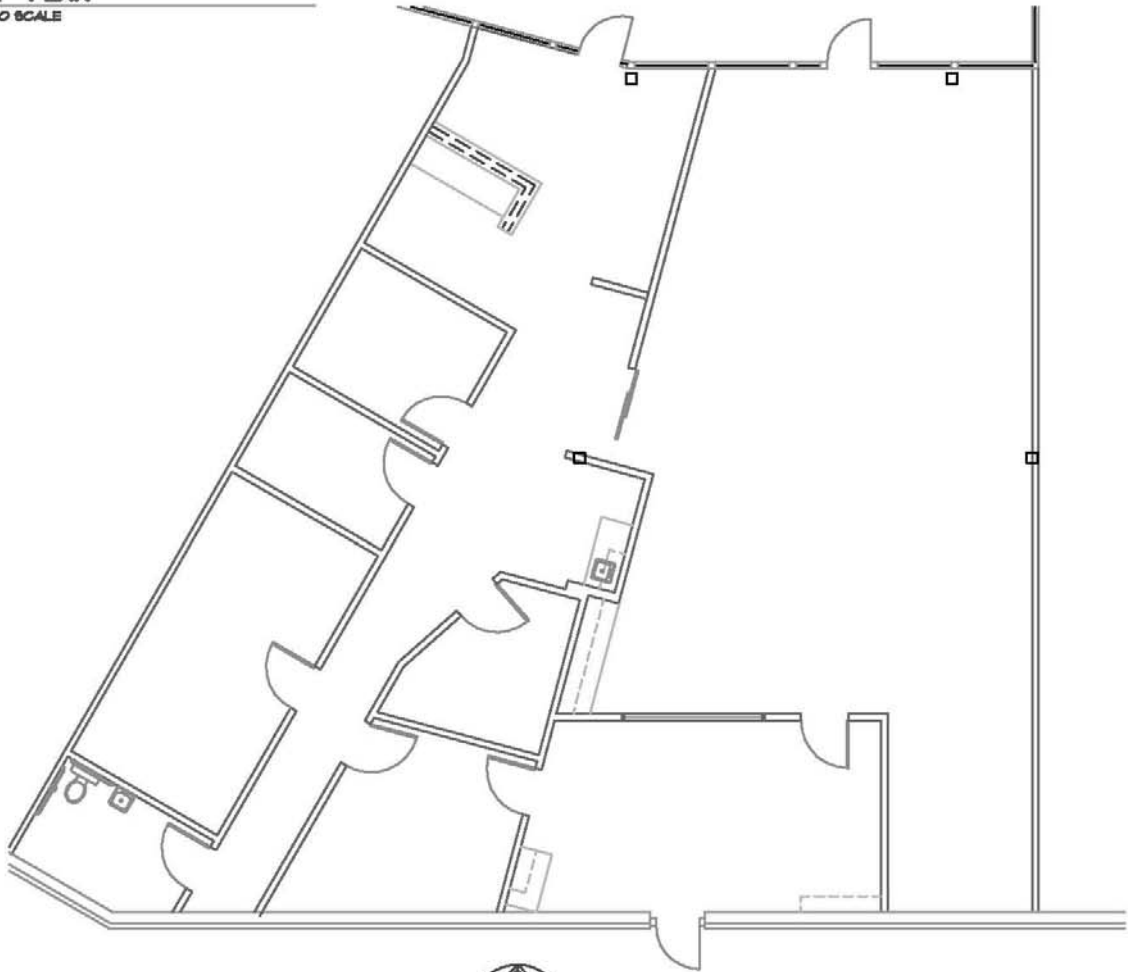
(414) 347-9400 | (414) 347-9401 fax

**The Leader In Commercial Real Estate.**

Information shown herein was provided by the Seller/Lessor and/or other third parties and has not been verified by the broker unless otherwise indicated.



**2 KEY PLAN**  
NOT TO SCALE



**1 FLOOR PLAN**  
3/32'±1'-0"



NORTH



### CROSSROADS CORPORATE CENTER V

SUITE 500/2,759 RSF  
21075 SWENSON DR.  
WAUKESHA, WISCONSIN 53186  
Not to Scale



Commercial Real Estate Services Worldwide.

20448

(414) 347-9400 | (414) 347-9401 fax

Information shown herein was provided by the Seller/Lessor and/or other third parties and has not been verified by the broker unless otherwise indicated.

**The Leader In Commercial Real Estate.**

**WISCONSIN REALTORS® ASSOCIATION**

4801 Forest Run Road  
Madison, Wisconsin 53704

**BROKER DISCLOSURE TO CUSTOMERS**

1 Prior to negotiating on your behalf the Broker must provide you the following disclosure statement:

2 **BROKER DISCLOSURE TO CUSTOMERS**

3 You are a customer of the broker. The broker is either an agent of another party in the transaction or a subagent of another broker  
4 who is the agent of another party in the transaction. The broker, or a salesperson acting on behalf of the broker, may provide  
5 brokerage services to you. Whenever the broker is providing brokerage services to you, the broker owes you, the customer, the  
6 following duties:

- 7  The duty to provide brokerage services to you fairly and honestly.
- 8  The duty to exercise reasonable skill and care in providing brokerage services to you.
- 9  The duty to provide you with accurate information about market conditions within a reasonable time if you request it, unless  
10 disclosure of the information is prohibited by law.
- 11  The duty to disclose to you in writing certain material adverse facts about a property, unless disclosure of the information is  
12 prohibited by law (**See Lines 55-63**).
- 13  The duty to protect your confidentiality. Unless the law requires it, the broker will not disclose your confidential information or the  
14 confidential information of other parties (**See Lines 22-39**).
- 15  The duty to safeguard trust funds and other property the broker holds.
- 16  The duty, when negotiating, to present contract proposals in an objective and unbiased manner and disclose the advantages and  
17 disadvantages of the proposals.

18 Please review this information carefully. A broker or salesperson can answer your questions about brokerage services, but if you  
19 need legal advice, tax advice, or a professional home inspection, contact an attorney, tax advisor, or home inspector.  
20 This disclosure is required by section 452.135 of the Wisconsin statutes and is for information only. It is a plain-language summary of  
21 a broker's duties to a customer under section 452.133 (1) of the Wisconsin statutes.

22 **CONFIDENTIALITY NOTICE TO CUSTOMERS**

23 BROKER WILL KEEP CONFIDENTIAL ANY INFORMATION GIVEN TO BROKER IN CONFIDENCE, OR ANY INFORMATION  
24 OBTAINED BY BROKER THAT HE OR SHE KNOWS A REASONABLE PERSON WOULD WANT TO BE KEPT CONFIDENTIAL,  
25 UNLESS THE INFORMATION MUST BE DISCLOSED BY LAW OR YOU AUTHORIZE THE BROKER TO DISCLOSE PARTICULAR  
26 INFORMATION. A BROKER SHALL CONTINUE TO KEEP THE INFORMATION CONFIDENTIAL AFTER BROKER IS NO LONGER  
27 PROVIDING BROKERAGE SERVICES TO YOU.

28 THE FOLLOWING INFORMATION IS REQUIRED TO BE DISCLOSED BY LAW:

- 29 1. MATERIAL ADVERSE FACTS, AS DEFINED IN SECTION 452.01 (5g) OF THE WISCONSIN STATUTES (**SEE LINES 55-63**).
- 30 2. ANY FACTS KNOWN BY THE BROKER THAT CONTRADICT ANY INFORMATION INCLUDED IN A WRITTEN INSPECTION  
31 REPORT ON THE PROPERTY OR REAL ESTATE THAT IS THE SUBJECT OF THE TRANSACTION.
- 32 TO ENSURE THAT THE BROKER IS AWARE OF WHAT SPECIFIC INFORMATION YOU CONSIDER CONFIDENTIAL, YOU MAY LIST  
33 THAT INFORMATION BELOW (**SEE LINES 35-36**). AT A LATER TIME, YOU MAY ALSO PROVIDE THE BROKER WITH OTHER  
34 INFORMATION YOU CONSIDER TO BE CONFIDENTIAL.

35 **CONFIDENTIAL INFORMATION:**

36 \_\_\_\_\_

37 **NON-CONFIDENTIAL INFORMATION** (The following information may be disclosed by Broker): \_\_\_\_\_

38 \_\_\_\_\_

39 (INSERT INFORMATION YOU AUTHORIZE THE BROKER TO DISCLOSE SUCH AS FINANCIAL QUALIFICATION INFORMATION.)

40 **CONSENT TO TELEPHONE SOLICITATION**

41 I/We agree that the Broker and any affiliated settlement service providers (for example, a mortgage company or title company) may  
42 call our/my home or cell phone numbers regarding issues, goods and services related to the real estate transaction until I/we  
43 withdraw this consent in writing.

44 **List Home/Cell Numbers:**

45 **SEX OFFENDER REGISTRY**

46 Notice: You may obtain information about the sex offender registry and persons registered with the registry by contacting the  
47 Wisconsin Department of Corrections on the Internet at: <http://offender.doc.state.wi.us/public/> or by phone at 877-234-0085.

48 BY INITIALING AND DATING BELOW I/WE ACKNOWLEDGE RECEIPT OF A COPY OF THIS DISCLOSURE AND  
49 THAT \_\_\_\_\_ and \_\_\_\_\_ are working

50 Sales Associate ▲ Firm Name ▲

51 as: (Owner's Listing Broker's Agent) (Buyer's/Tenant's Agent or Buyer's Broker's Agent) **STRIKE ONE**.

52 **INITIALING THIS FORM TO ACKNOWLEDGE RECEIPT DOES NOT CREATE ANY LEGAL OBLIGATIONS TO BROKER.**

53 \_\_\_\_\_

54 Initials ▲ Date ▲ Print Name (optional) ▲ Initials ▲ Date ▲ Print Name (optional) ▲

No representation is made as to the legal validity of any provision or the adequacy of any provision in any specific transaction.  
Copyright 2006 by Wisconsin REALTORS® Association  
NAI MLG Commercial 13400 Bishop's Ln Ste 100, Brookfield WI 53005-6237 Phone (262) 797-9400 Drafted by Attorney Richard J. Staff Fax (262) 797-8940

55 **DEFINITION OF MATERIAL ADVERSE FACTS**

56 A "material adverse fact" is defined in Wis. Stat. § 452.01(5g) as an adverse fact that a party indicates is of such significance, or that  
57 is generally recognized by a competent licensee as being of such significance to a reasonable party, that it affects or would affect  
58 the party's decision to enter into a contract or agreement concerning a transaction or affects or would affect the party's decision  
59 about the terms of such a contract or agreement. An "adverse fact" is defined in Wis. Stat. § 452.01(1e) as a condition or occurrence  
60 that a competent licensee generally recognizes will significantly and adversely affect the value of the property, significantly reduce  
61 the structural integrity of improvements to real estate, or present a significant health risk to occupants of the property; or information  
62 that indicates that a party to a transaction is not able to or does not intend to meet his or her obligations under a contract or  
63 agreement made concerning the transaction.