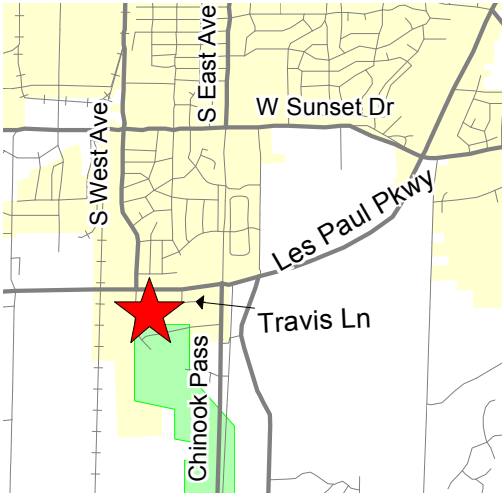


405 Travis Lane · Waukesha, WI

For Sale

Reduced Price



Property Features

Size:	+/- 10,500 SF
Construction:	Metal
Year Built:	1971
Parking:	Ample
Zoning:	M-2 (General MFG)

Warehouse Features

Size:	+/- 9,000 SF
Ceiling Height:	+/- 9' 6" - 12' 6"
Dock Doors:	1
Drive-Ins:	1
Lighting:	Fluorescent
Power:	400 Amp/240 Volt/3-Phase

Office Features

Size:	+/- 1,500 SF
HVAC:	Fully air conditioned

Parcel Size

+/- 1.10 acres

Tax Information

Tax Key #:	2911356104
RE Tax (2008):	\$7,294.32

Sale Price

\$479,900 (Reduced Price)

For Information:

Brett J. Garceau

(262) 364-5546

bgarceau@mlgcommercial.com

Adam R. Matson

(262) 364-5529

amatson@mlgcommercial.com

- Fully heated and air conditioned building
- Floor drains
- Ample parking & room for expansion
- Potential income from tenants

NAI MLG Commercial

Commercial Real Estate Services Worldwide.

13400 Bishop's Lane • Suite 100
Brookfield, WI 53005

(262) 797-9400 | (262) 797-8940 fax

Offices also in Milwaukee, Appleton and Madison, WI

www.mlgcommercial.com

21237

The Leader In Commercial Real Estate.

Information shown herein was provided by the Seller/Lessor and/or other third parties and has not been verified by the broker unless otherwise indicated.

WISCONSIN REALTORS® ASSOCIATION

4801 Forest Run Road
Madison, Wisconsin 53704

BROKER DISCLOSURE TO CUSTOMERS

1 Prior to negotiating on your behalf the Broker must provide you the following disclosure statement:

2 **BROKER DISCLOSURE TO CUSTOMERS**

3 You are a customer of the broker. The broker is either an agent of another party in the transaction or a subagent of another broker
4 who is the agent of another party in the transaction. The broker, or a salesperson acting on behalf of the broker, may provide
5 brokerage services to you. Whenever the broker is providing brokerage services to you, the broker owes you, the customer, the
6 following duties:

- 7 The duty to provide brokerage services to you fairly and honestly.
- 8 The duty to exercise reasonable skill and care in providing brokerage services to you.
- 9 The duty to provide you with accurate information about market conditions within a reasonable time if you request it, unless
10 disclosure of the information is prohibited by law.
- 11 The duty to disclose to you in writing certain material adverse facts about a property, unless disclosure of the information is
12 prohibited by law (**See Lines 55-63**).
- 13 The duty to protect your confidentiality. Unless the law requires it, the broker will not disclose your confidential information or the
14 confidential information of other parties (**See Lines 22-39**).
- 15 The duty to safeguard trust funds and other property the broker holds.
- 16 The duty, when negotiating, to present contract proposals in an objective and unbiased manner and disclose the advantages and
17 disadvantages of the proposals.

18 Please review this information carefully. A broker or salesperson can answer your questions about brokerage services, but if you
19 need legal advice, tax advice, or a professional home inspection, contact an attorney, tax advisor, or home inspector.
20 This disclosure is required by section 452.135 of the Wisconsin statutes and is for information only. It is a plain-language summary of
21 a broker's duties to a customer under section 452.133 (1) of the Wisconsin statutes.

22 **CONFIDENTIALITY NOTICE TO CUSTOMERS**

23 BROKER WILL KEEP CONFIDENTIAL ANY INFORMATION GIVEN TO BROKER IN CONFIDENCE, OR ANY INFORMATION
24 OBTAINED BY BROKER THAT HE OR SHE KNOWS A REASONABLE PERSON WOULD WANT TO BE KEPT CONFIDENTIAL,
25 UNLESS THE INFORMATION MUST BE DISCLOSED BY LAW OR YOU AUTHORIZE THE BROKER TO DISCLOSE PARTICULAR
26 INFORMATION. A BROKER SHALL CONTINUE TO KEEP THE INFORMATION CONFIDENTIAL AFTER BROKER IS NO LONGER
27 PROVIDING BROKERAGE SERVICES TO YOU.

28 THE FOLLOWING INFORMATION IS REQUIRED TO BE DISCLOSED BY LAW:

- 29 1. MATERIAL ADVERSE FACTS, AS DEFINED IN SECTION 452.01 (5g) OF THE WISCONSIN STATUTES (**SEE LINES 55-63**).
- 30 2. ANY FACTS KNOWN BY THE BROKER THAT CONTRADICT ANY INFORMATION INCLUDED IN A WRITTEN INSPECTION
31 REPORT ON THE PROPERTY OR REAL ESTATE THAT IS THE SUBJECT OF THE TRANSACTION.
- 32 TO ENSURE THAT THE BROKER IS AWARE OF WHAT SPECIFIC INFORMATION YOU CONSIDER CONFIDENTIAL, YOU MAY LIST
33 THAT INFORMATION BELOW (**SEE LINES 35-36**). AT A LATER TIME, YOU MAY ALSO PROVIDE THE BROKER WITH OTHER
34 INFORMATION YOU CONSIDER TO BE CONFIDENTIAL.

35 **CONFIDENTIAL INFORMATION:**

36 _____

37 **NON-CONFIDENTIAL INFORMATION** (The following information may be disclosed by Broker): _____

38 _____

39 (INSERT INFORMATION YOU AUTHORIZE THE BROKER TO DISCLOSE SUCH AS FINANCIAL QUALIFICATION INFORMATION.)

40 **CONSENT TO TELEPHONE SOLICITATION**

41 I/We agree that the Broker and any affiliated settlement service providers (for example, a mortgage company or title company) may
42 call our/my home or cell phone numbers regarding issues, goods and services related to the real estate transaction until I/we
43 withdraw this consent in writing.

44 **List Home/Cell Numbers:**

45 _____

45 **SEX OFFENDER REGISTRY**

46 Notice: You may obtain information about the sex offender registry and persons registered with the registry by contacting the

47 Wisconsin Department of Corrections on the Internet at: <http://offender.doc.state.wi.us/public/> or by phone at 877-234-0085.

48 BY INITIALING AND DATING BELOW I/WE ACKNOWLEDGE RECEIPT OF A COPY OF THIS DISCLOSURE AND

49 THAT _____ and _____ are working

50 Sales Associate ▲ Firm Name ▲

51 as: (Owner's Listing Broker's Agent) (Buyer's/Tenant's Agent or Buyer's Broker's Agent) **STRIKE ONE**.

52 **INITIALING THIS FORM TO ACKNOWLEDGE RECEIPT DOES NOT CREATE ANY LEGAL OBLIGATIONS TO BROKER.**

53 _____

54 Initials ▲ Date ▲ Print Name (optional) ▲ Initials ▲ Date ▲ Print Name (optional) ▲

No representation is made as to the legal validity of any provision or the adequacy of any provision in any specific transaction.
Copyright 2006 by Wisconsin REALTORS® Association
NAI MLG Commercial 13400 Bishop's Ln Ste 100, Brookfield WI 53005-6237 Phone (262) 797-9400 Drafted by Attorney Richard J. Staff Fax (262) 797-8940

55 **DEFINITION OF MATERIAL ADVERSE FACTS**

56 A "material adverse fact" is defined in Wis. Stat. § 452.01(5g) as an adverse fact that a party indicates is of such significance, or that
57 is generally recognized by a competent licensee as being of such significance to a reasonable party, that it affects or would affect
58 the party's decision to enter into a contract or agreement concerning a transaction or affects or would affect the party's decision
59 about the terms of such a contract or agreement. An "adverse fact" is defined in Wis. Stat. § 452.01(1e) as a condition or occurrence
60 that a competent licensee generally recognizes will significantly and adversely affect the value of the property, significantly reduce
61 the structural integrity of improvements to real estate, or present a significant health risk to occupants of the property; or information
62 that indicates that a party to a transaction is not able to or does not intend to meet his or her obligations under a contract or
63 agreement made concerning the transaction.

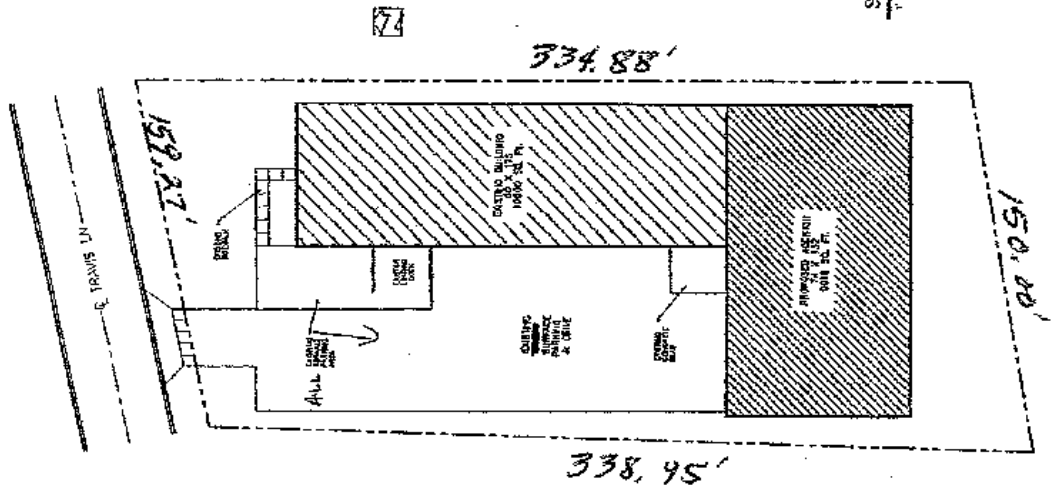
K.V. BUILDERS INC.
GENERAL CONTRACTORS

KENNETH VONDROSS

5.43-W 27166 Country Lane
 Waukesha, WI 53188

(414) 547-5110
 FAX 547-5000

K. V. BUILDERS, INC. GENERAL CONTRACTORS 5.43 W. COUNTRY LANE WAUKESHA, WI 53188 OFFICE 414-547-5110 FAX 414-547-5000		MADE BY R & R MACHINE PRODUCTS 405 TRAVIS LN WAUKESHA, WI 53186 TEL 262-544-2900	DATE 11-24-98 AS NOTED DRAWN BY MLG SITE PLAN 1" = 20'
--	--	---	---



SITE PLAN
 1" = 20'

NAI MLG Commercial
 Commercial Real Estate Services Worldwide.

21237

(262) 797-9400 | **(262) 797-8940** fax

Information shown herein was provided by the Seller/Lessor and/or other third parties and has not been verified by the broker unless otherwise indicated.

The Leader In Commercial Real Estate.